

HEAD INSIDE RIGHT

HEAD BACK

HEAD FRONT



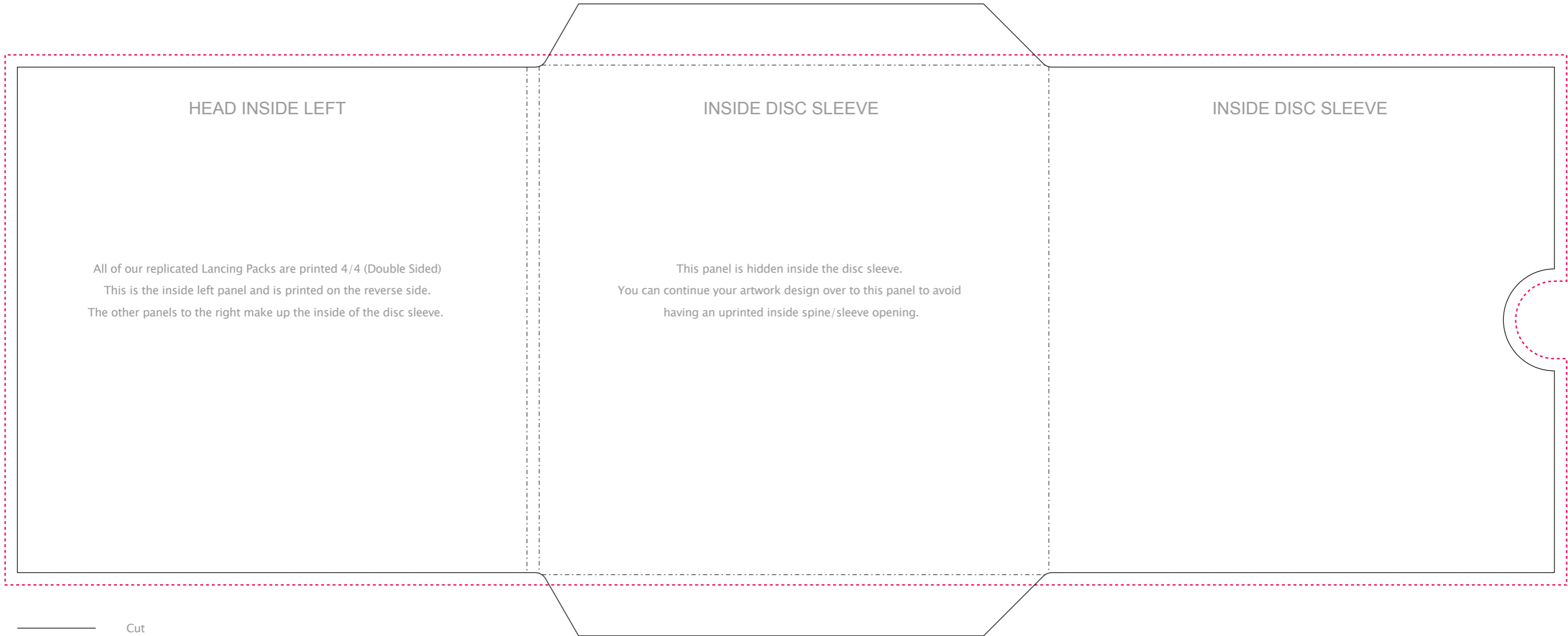
Before uploading please ensure your designs meet the [Artwork Guidelines.pdf](#)
Incorrectly prepared artwork may cause delays and/or incur additional charges.

PLEASE NOTE:

- All artwork MUST extend 3mm past the cut line to the bleed line (pink dotted line).
- All text MUST be converted to outlines to avoid font issues.
- DO NOT flatten template layers into artwork.
- Avoid text or graphics closer than 3mm to die cut edges.
- CMYK colour mode.
- Minimum resolution 300DPI.

SPINE TEXT THIS WAY UP

- Cut
- - - - - Bleed
- · - · - · - Fold



HEAD INSIDE LEFT

All of our replicated Lancing Packs are printed 4/4 (Double Sided)
This is the inside left panel and is printed on the reverse side.
The other panels to the right make up the inside of the disc sleeve.

INSIDE DISC SLEEVE

This panel is hidden inside the disc sleeve.
You can continue your artwork design over to this panel to avoid
having an uprinted inside spine/sleeve opening.

INSIDE DISC SLEEVE

- Cut
- - - - - Bleed
- · · · · Fold